

The Impact of Standards-Based Open Source LMIS for Sustainable Supply Chain Management



OpenLMIS

HHL 2018
Tenly Snow

OpenLMIS Community Manager

The goal

Today, I hope that you leave with a better understanding of:

1. What OpenLMIS is and what is in the latest release
2. Where OpenLMIS fits into a country's information system landscape and where it can provide value
3. Ways to engage with the OpenLMIS Community and learn more about potential implementation

If I don't meet this goal or if you'd just like to learn more, please get in touch after the presentation

Presenter & Topics



Tenly Snow

OpenLMIS Community Manager

Support and develop community processes, facilitate communication between partners, identify new opportunities for partnerships and implementations.

Topics

- Community
- Vision
- Features
- Impact
- Standards
- Getting involved



Open**LMIS**

A woman in a white lab coat is seated at a desk, looking towards a group of women and children. The group consists of several women, some holding infants. They are standing in a room that appears to be a community health center or clinic. On the desk, there are several white plastic containers, papers, and a clipboard. In the background, there are posters on the wall, one of which has the text "DESENVOLVIMENTO NA INFANCIA" and "a criança já sabe fazer?". The word "Community" is overlaid in large white text across the center of the image.

Community

OpenLMIS Initiative

Donors

BILL & MELINDA
GATES foundation



USAID
FROM THE AMERICAN PEOPLE



The ROCKEFELLER
FOUNDATION



PEPFAR
U.S. President's Emergency Plan for AIDS Relief



Life Saving
Commodities
Improving access,
saving lives



Gavi
The Vaccine Alliance

Implementers



Chemonics

VILLAGE REACH
Starting at the Last M



AGENCE DE
MEDECINE
PREVENTIVE



Technology Partners

ONN



solutions development

ThoughtWorks®



Community



Governance Committee

Leadership for the community.

- defines community processes
- leads fundraising and advocacy efforts

Members: Senior representatives of Trusted Community Partners



Product Committee

Helps “build the right product.”

- discuss roadmap requirements and new features
- reviews contributions from implementations

Members: Community partners with technical experience



Technical Committee

Builds the product the “right way.”

- manages the system architecture
- sets clear standards for code quality

Members: Software developers and active OpenLMIS developers

OpenLMIS Trusted Partners have experience implementing OpenLMIS and other Health Information Systems (HIS) tools.

These partners are available to support OpenLMIS implementations in a variety of ways.



Vision

The OpenLMIS Software Vision

Shared Investment, Shared Benefit



Promoting code reuse through microservices architecture and community approach

Interoperable



Standards-based, API-driven interoperability to work with almost any other system

Configurable and Extensible

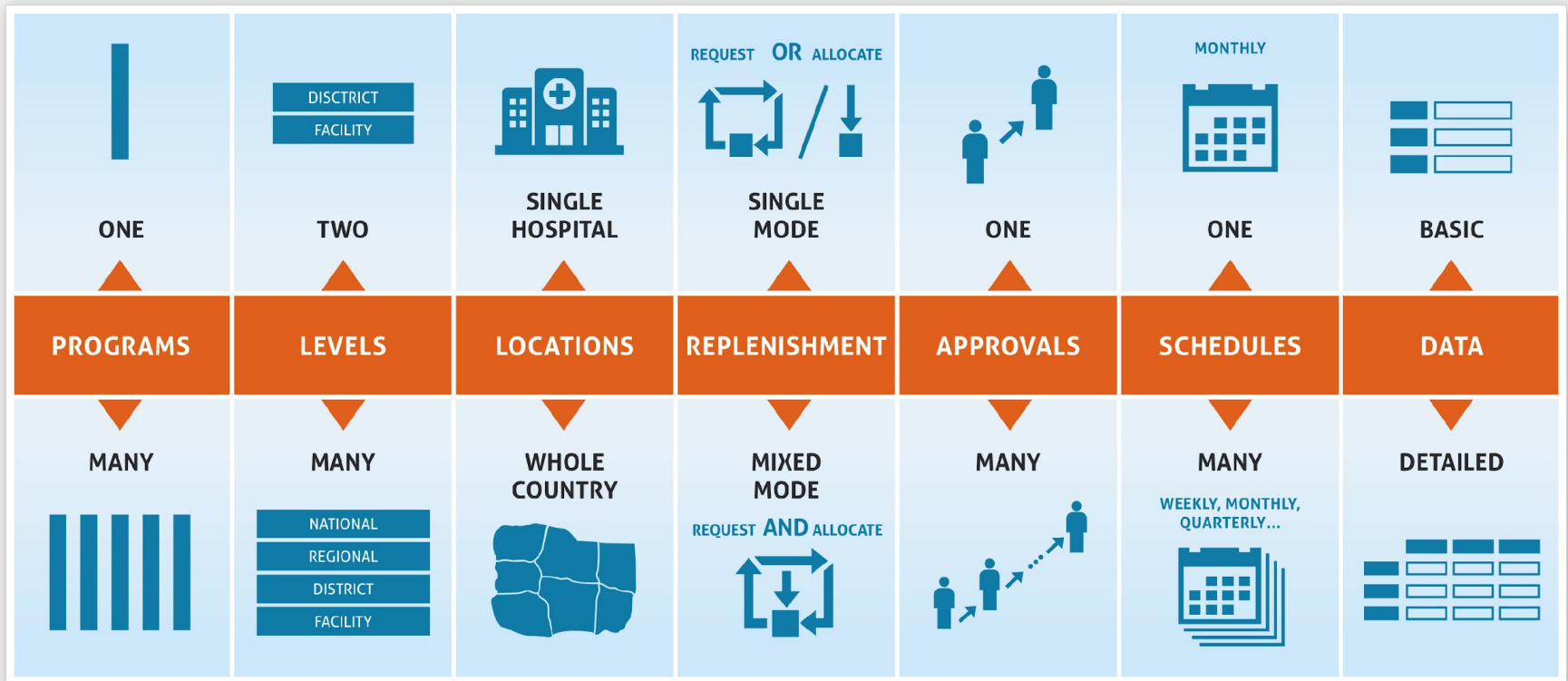


Modular architecture enables extensibility *without* forking

A photograph of three healthcare workers, likely nurses, in white coats, focused on a baby in a white wire crib. One worker is holding the baby, while the others look on. The scene is set in a clinical environment, possibly a hospital ward. The image has a light blue overlay.

Features

Configurability



Version 3 Key Features



Modular Architecture for Extensibility

Modular, API-driven approach emphasizes extensibility and ease-of-customization



Requisitions (Ordering)

Request new stock based on consumption or estimated need



Stock Management and Local Fulfillment (Inventory Management)

Quality, real-time, data on stock availability for supply chain managers



Vaccine Management

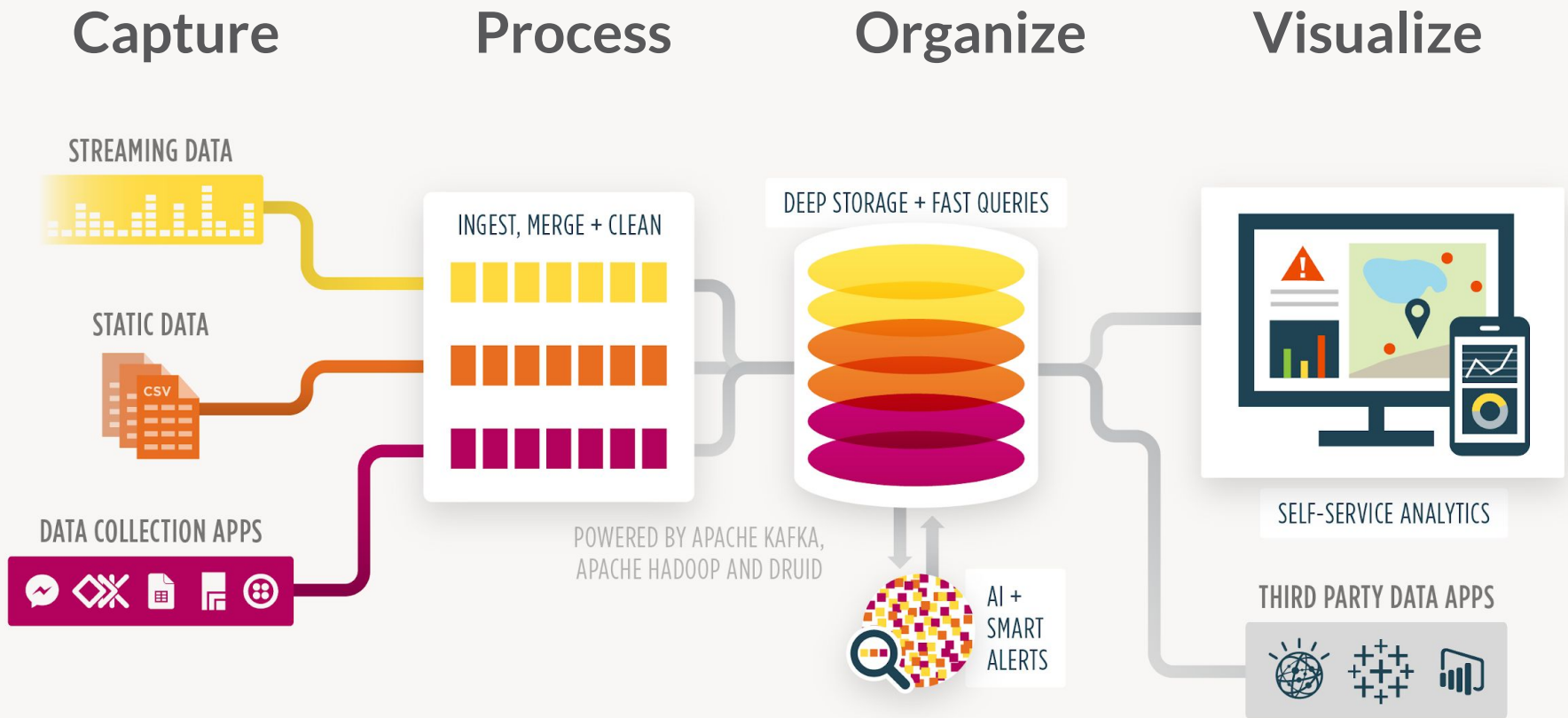
Cold chain inventory and vaccine stock management, vaccine logistics data



Reporting and Analytics

Open source, big data warehouse and analytics infrastructure with visualizations

Analytics Infrastructure



Integrations



- Connects dispensing and supply information at the point of care
- Proof-of-concept built with Ona

Supports offline health records for all registered clients

Manages stock is able to match the client to commodity disbursement



- First time RTM data is directly available within the OpenLMIS core platform
- Leverages the FHIR standard for exchanging information on facilities and devices

Notifies users about outages in cold chain equipment

Within OpenLMIS, logisticiens can review CCE status when planning resupply

A dirt road winds through a dry, hilly landscape under a blue sky with scattered white clouds. The word "Impact" is overlaid in large white text.

Impact

Through 9
implementations



OpenLMIS manages
logistics processes for
over 10,000 health
facilities across Africa

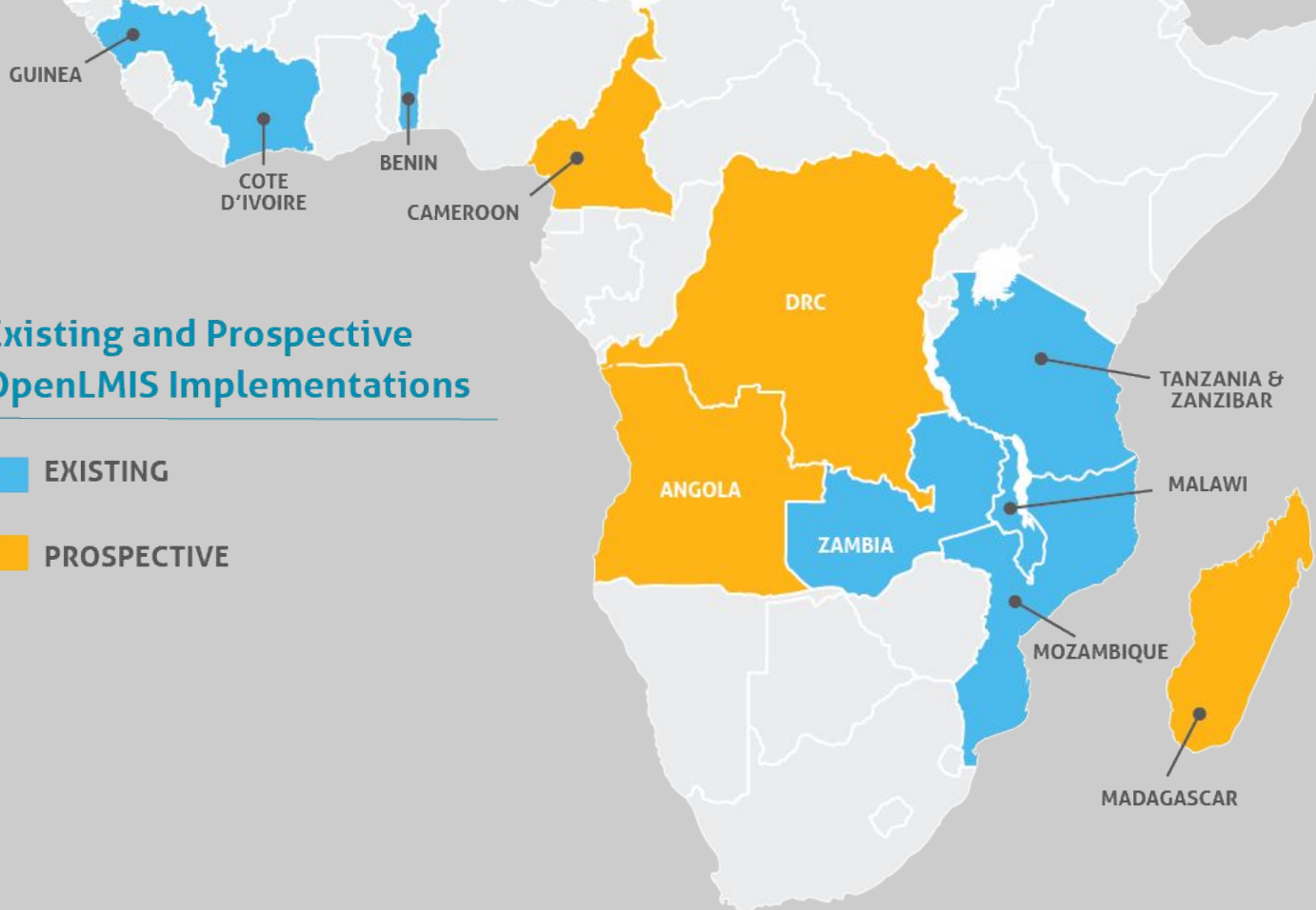


Increasing
data visibility and
timeliness

Reducing
stockout frequency
and duration

Existing and Prospective OpenLMIS Implementations


-  EXISTING
-  PROSPECTIVE



A photograph of three healthcare workers, likely nurses or doctors, in white coats. They are gathered around a large white refrigerator with its door open. One worker is holding a white wire basket filled with supplies, possibly vaccines or medical equipment. The scene is set in a clinical or hospital environment. The image has a blue tint and a semi-transparent text overlay.

OpenLMIS makes it easier for me to elaborate reports at the end of each distribution.

Mumino Amisse, Provincial EPI Manager (Cabo Delgado)



With OpenLMIS we have an accurate view of actual consumption. Before, it was hard to know what we actually needed. Having access to this data has helped to reduce stockouts and also address the issue of overstocking.”

Provincial Medical Chief,
Mozambique (Bertur Alface)

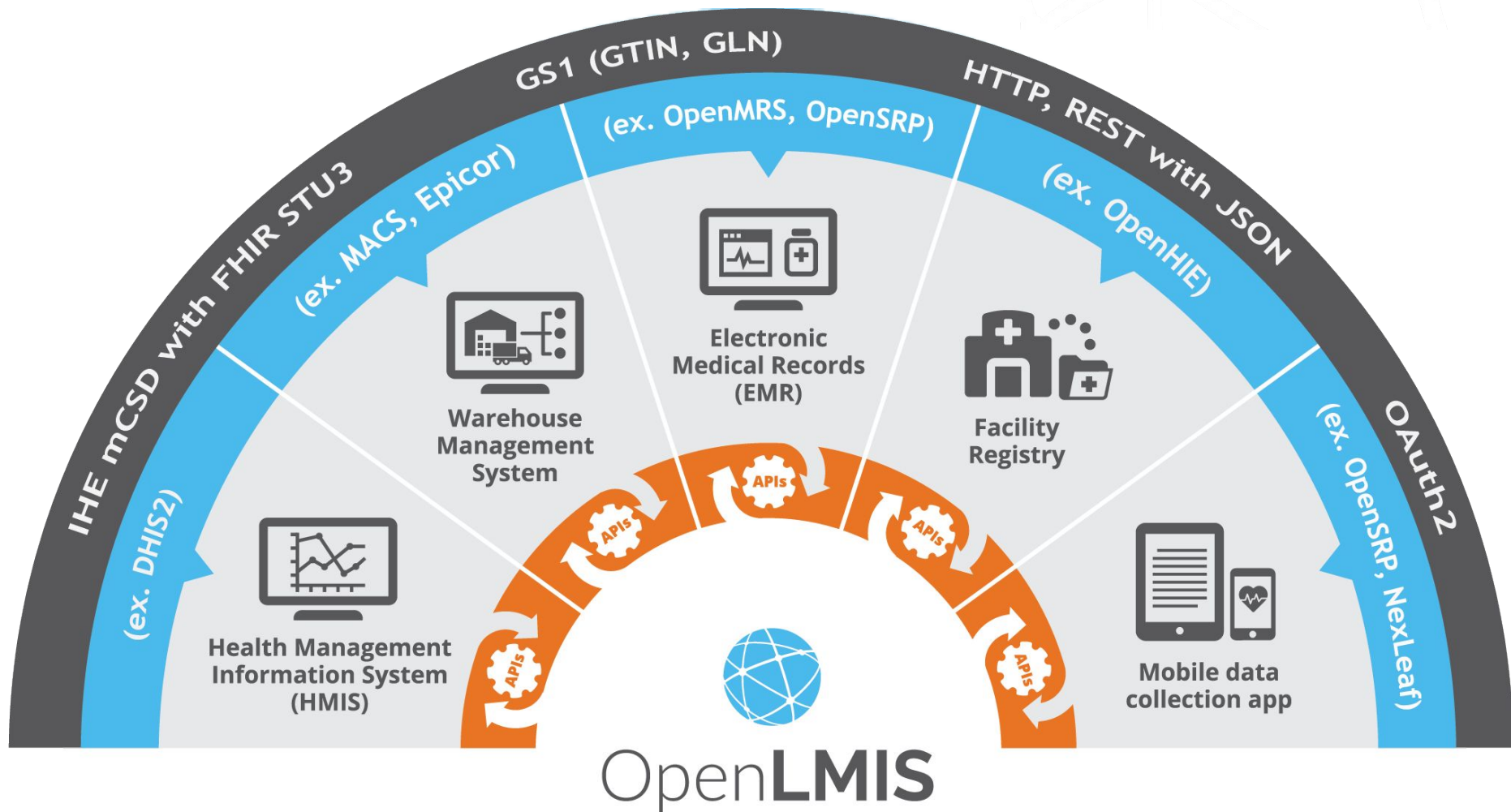
How countries have performed with OpenLMIS

	Without OpenLMIS	With OpenLMIS
Time taken to perform order calculations	3 hours	1 minute
Stockout rates	19%	5%

Standards



Standards based interoperability



Getting Involved



New Support Materials

Implementer Toolkit

Before You Start

Learn more about OpenLMIS and determine the scope of the implementation. >

0



Get Started

Lay the groundwork for a successful deployment

1



Plan

Develop your project plan for an OpenLMIS deployment

2



Implement

Set up, customize, and deploy OpenLMIS

3



Expand

Scale up your deployment from a pilot

4



Maintain

Keep your system running and take advantage of new releases and features

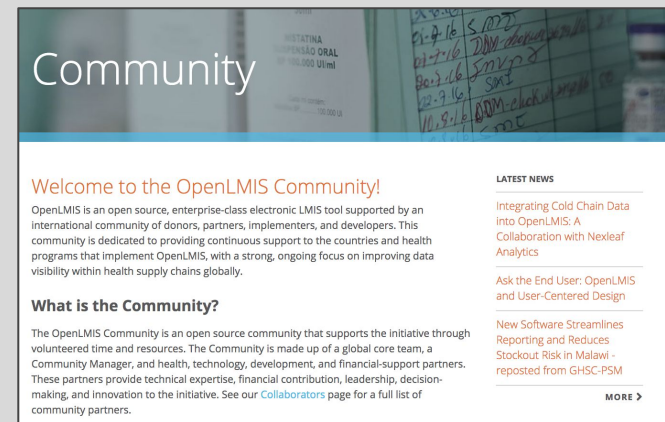
Getting involved



Contribute to the toolkit

The OpenLMIS Implementer Toolkit is only as good as its contributors!

We welcome feedback and additional resources to help make the Toolkit a valuable and useful guide

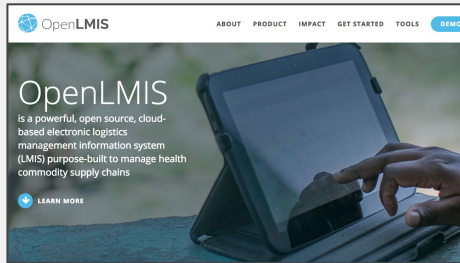


Join the Community

What sets OpenLMIS apart is the support of highly skilled and experienced partners

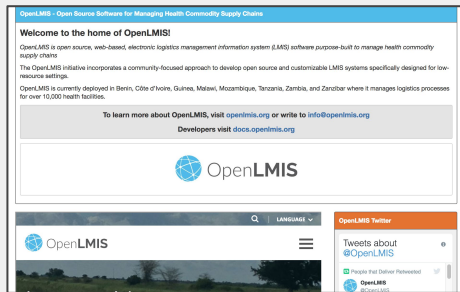
Add your voice to this growing community of global health leaders and help make OpenLMIS even better

Learning more



openlmis.org

Blog posts, implementation map, features, tools, and the Implementer Toolkit can be found on the OpenLMIS website.



Wiki

The wiki is the source for community meeting notes, committee descriptions, product design considerations, project management, and the living product roadmap.



Documentation

ReadtheDocs contains developer-oriented OpenLMIS documentation. Users can find developer docs, ERD schemas, an OpenLMIS coding style guide, and API documentation.

Visit the OpenLMIS YouTube channel for demo videos and more

Takeaways

1. WHO WE ARE

An **open source** technology solution and **initiative** that can help countries **actively manage** their complex supply chains.

2. WHAT WE CAN DO

End-to-end data visibility, with improved access and quality data to address barriers to data usage--- OpenLMIS **improves data reporting** and makes it enticing.

3. WHAT SETS US APART

OpenLMIS strives for **standards-based interoperability** and provides a **highly configurable and extensible system** to meet countries where they are at.

4. HOW CAN WE WORK TOGETHER

OpenLMIS has **no software licensing fee** – allowing countries to focus investments on people, processes, and improving local health systems.

Thank you



OpenLMIS

Come chat now with questions

openlmis.org
info@openlmis.org